



Proofing Procedure Guide

English

Brisque and Veris

**Ouputting a Proof for the PPA
proof4press Standard**

Copyright

Copyright © 2004 Creo Inc. All rights reserved. The Creo wordmark, Creo logo, and the names of the Creo products and services referred to in this document are trademarks of Creo Inc.

Adobe, Acrobat, Adobe Illustrator, Distiller, Photoshop, PostScript, and PageMaker are trademarks of Adobe Systems Incorporated. Apple, iMac, Power Macintosh, AppleShare, AppleTalk, TrueType, ImageWriter, and ImageWriter are registered trademarks of Apple Computer, Inc. Macintosh is a trademark of Apple Computer, Inc., registered in the U.S.A. and other countries. PANTONE, Hexachrome, PANTONE Hexachrome, and PANTONE MATCHING SYSTEM are the property of Pantone, Inc. PEARL, PEARLsetter, PEARLhdp, PEARLdry, and PEARLgold are registered trademarks of Presstek, Inc. Xerox, DocuColor, and MajestiK Color Series are trademarks of Xerox Corporation in the U.S. and/or other countries. Other brand or product names are the trademarks or registered trademarks of their respective owners.

No copying, distribution, publication, modification, or incorporation of this document, in whole or part, is permitted without the express written permission of Creo Inc. In the event of any permitted copying, distribution, publication, modification, or incorporation of this document, no changes in or deletion of author attribution, trademark legend, or copyright notice shall be made. No part of this document may be reproduced, stored in a retrieval system, published, used for commercial exploitation, or transmitted, in any form by any means, electronic, mechanical, photocopying, recording, or otherwise, without the express written permission of Creo Inc. This document is distributed in Adobe Systems Incorporated's PDF (Portable Document Format). You may reproduce the document from the PDF file for internal use. Copies produced from the PDF file must be reproduced in whole.

.....
Creo Inc.
3700 Gilmore Way
Burnaby, B.C., Canada
V5G 4M1
Tel: +1.604.451.2700
Fax: +1.604.437.9891

<http://www.creo.com>

.....
Internal 734-00119A-EN Rev A
Revised August 2004

Contents

- Introduction** **1**
 - Tools Required 1
 - Versions of Brisque and Veris Supported 2
 - Assumptions 2
 - Other Reference Material 2
 - Proofing Workflow Overview 2

- PPA Tools** **3**
 - Introduction 3
 - PPA proof4press Control Strip 3
 - PPA Approved Device Link Profiles for Veris 4
 - proof4press Verifier Software and Tolerances 4

- Setting Up Veris** **5**
 - Introduction 5
 - Calibrating Veris 5
 - Importing the PPA Approved Device Link Profile 5

- Using Brisque to Manage Color** **6**
 - Introduction 6
 - Setting Up Brisque 6
 - Creating a DCP Color Set on the Brisque Server 6
 - Setting Up the Proof Operation and Turning On Color Management 7
 - Outputting Proofs 10

Introduction

This document describes how to use Brisque® software and a Veris™ proofer to output a proof that meets the Periodical Publishers Association (PPA) proof4press standard.

The proof4press standard defined by PPA (<http://www.PPA.co.uk>) conforms to ISO printing standard 12647, and it currently concentrates on magazines produced on coated paper in the United Kingdom.

Creo supports the proof4press standard by providing PPA approved device link profiles for Veris. PPA provides the other tools you need: the PPA proof4press control strip and the proof4press Verifier software. For more information on the PPA tools, see *PPA Tools* on page 3.

The main steps for outputting a proof that meets the proof4press standard are:

1. Calibrate Veris for the media.
2. Import the PPA approved device link profile into Veris Administrator for the Creo Certified Process.
3. Set up the workflow to apply the PPA approved device link profile, place the PPA proof4press control strip, and use the Creo Certified Process to output a proof that meets the PPA proof4press standard.
4. Measure the PPA proof4press control strip, using an X-Rite DTP 41 with UV filter.
5. Import the measurement data into the proof4press Verifier software to verify that it is within the 2 ΔE tolerance.

The press operator uses the proof as a guide to help correctly print the job.

Tools Required

Table 1 lists the tools you will need to use this document.

Table 1: Tools Required

Tool	Where to Find the Tool
PPA approved device link profile for Veris	Included in the download on the eCentral Web site: https://ecentral.creo.com/eCentral/Self_Support/Downloads.asp
PPA proof4press control strip	Submit a request for a free copy from PPA via this Web site: http://www.lmal.co.uk/order_now.asp
PPA proof4press Verifier software	Order it from PPA via this Web site: http://www.lmal.co.uk/order_now.asp

Versions of Brisque and Veris Supported

This document applies to:

- Brisque versions:
 - 4.1 plus patch 4_1_76_veris installed or later
 - 5.0.61.6 plus the proof patch installed or later
- Veris Series 5 (includes software version 1.4) or later

You will also need an X-Rite DTP 41 spectrophotometer with UV filter to measure the PPA proof4press control strip.

Assumptions

This document assumes that Brisque is connected to the Veris proofer and that you are able to output proofs. For details, see *Configuring Brisque to Output Proofs to Veris Technical Bulletin*, which is included in the Veris series 6 (software version 1.6) online help, or you can download the document from eCentral (<https://ecentral.creo.com>).

Other Reference Material

- Brisque online help
- Veris online help

Proofing Workflow Overview

When using Brisque software with a Veris proofer to output proofs that simulate a PPA proof4press standard, you must use Brisque software to apply the PPA approved device link profile and place the PPA proof4press control strip.

PPA Tools

Introduction

Three tools are available to help you output proofs that meet the proof4press standard:

- PPA proof4press control strip
- PPA approved device link profiles for Veris
- proof4press Verifier software

This section describes the PPA proof4press control strip, the PPA approved device link profile for Veris, and the proof4press Verifier software.

PPA proof4press Control Strip

The PPA proof requirements center around the PPA proof4press control strip.

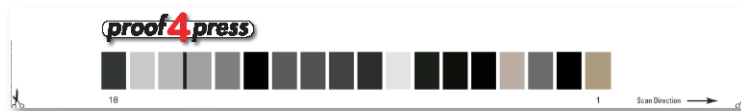


Figure 1: Example of an PPA proof4press control strip

The PPA proof4press control strip consists of 18 patches of varying levels of grayscale.

PPA Approved Device Link Profiles for Veris

PPA certification on Veris is currently only available on one media: Veris Pro Commercial Semi-Matte 285. You must calibrate the Veris proofer for this media and only use this media when producing a PPA approved proof. Use the certified device link profile identified in Table 2.

Table 2: PPA Approved Device Link Profile for Veris

Media	PPA Standard	PPA Approved Device Link Profile
Veris Pro Commercial Semi-Matte 285	proof4press	Veris-COM-PPA-062204.dvl

proof4press Verifier Software and Tolerances

The allowed tolerances for the PPA proof4press control strip are $2 \Delta E$. Use an X-Rite DTP 41 with UV filter to measure the PPA proof4press control strip, and then enter the measurements into the proof4press Verifier software, which includes target measurements for the Veris Control Strip. The proof4press Verifier software indicates whether the readings of the proof4press control strip are within the $2 \Delta E$ tolerance specified.

Setting Up Veris

Introduction

This section describes how to calibrate Veris and import the PPA approved device link profile to prepare for the Creo Certified Process.

Calibrating Veris

Use the Calibration Wizard to calibrate the Veris proofer for the Veris Pro Commercial Semi-Matte 285 media and the Veris ProPack GA Ink Kit. For details, see the Veris online help.

Importing the PPA Approved Device Link Profile

To import a device link profile:

1. Copy the PPA approved device link profile to the network.
2. In Veris Administrator, click the ICC Profiles tab.
3. Click the **Import** button.
4. Navigate to and select the PPA approved device link profile.
5. Click the **Open** button.

The PPA approved device link profile is copied from the network folder to Veris.

Using Brisque to Manage Color

Introduction

This section describes how to use Brisque to apply the PPA approved device link profile and place the PPA proof4press control strip for output on a Veris.

Note: The procedures in this section were created using Brisque 5.0.61.6.

Setting Up Brisque

The main steps are:

1. Create a Digital Color Profile (DCP) color set for the PPA approved device link profile. See *Creating a DCP Color Set on the Brisque Server* on page 6.
2. Set up the Proof operation to place the PPA proof4press control strip, manage color, and output proofs. See *Setting Up the Proof Operation and Turning On Color Management* on page 7.

Creating a DCP Color Set on the Brisque Server

This section describes how to create a DCP color set for the PPA approved profile. You create the DCP color set on the Brisque server, and you must have administrator rights to perform this procedure.

The choices you make for the options identified in Table 3 are crucial, because the options work together.

Table 3: Crucial Brisque settings for the DCP

Option	Setting for Veris
Device Link Profile	Use the PPA approved device link profile: Veris-COM-PPA-062204.dvl
Calibration Name	Veris Pro Commercial Semi-Matte 285

To create a DCP Color Set:

1. Place the PPA approved profile in the following location on the local Brisque: **SharedItems\ICC_Profiles**.
2. If you're using Brisque 5.0, add the PPA approved device link profile to the Resource Center. If you're using Brisque 4.1, skip this step.
 - a. In the Brisque Client, from the **Tools** menu, select **Resource Center**.
 - b. From the **Select a category** box, select **ICC Profiles**.
 - c. Double-click the **DVL** folder.
 - d. Click the **+** button.
 - e. Navigate to and select the PPA approved device link profile, and then click **Choose**.
 - f. Click **Done**.
3. At the Brisque server, in the Brisque Services window, click **Device Handling**.
4. Expand **Proof > Veris**, and then highlight the name of the proofer.
5. Click **Color Set**.
6. In the **Color Set List** dialog box, click **New**.
The DCP Color Sets dialog box appears.
7. Set the following options:
 - From the **DCP Mode** box, select **ICC Profiles**.
 - Select the **Device Link Profile** check box, and then navigate to and select the PPA approved device link profile: **Veris-COM-PPA-062204.dvl**.
 - From the **Calibration Name** box, select **Veris Pro Commercial Semi-Matte 285 media**.
8. Click **Save As**.
9. In the **Save this color set as** box, type a meaningful name for the DCP color set, and then click **OK**.
10. Click **Exit** twice.

Setting Up the Proof Operation and Turning On Color Management

This section describes how to set up a Proof operation to apply the DCP color set and place the PPA proof4press control strip. You set up the Proof operation in the Brisque client.

To set up the Proof operation to output to Veris:

1. Place the PPA proof4press control strip in the following location on the local Brisque: **SharedItems\Color_Strip**.
2. In the **Workflow Palette**, click the **Template** icon, click the arrow, and then select **New Template**.

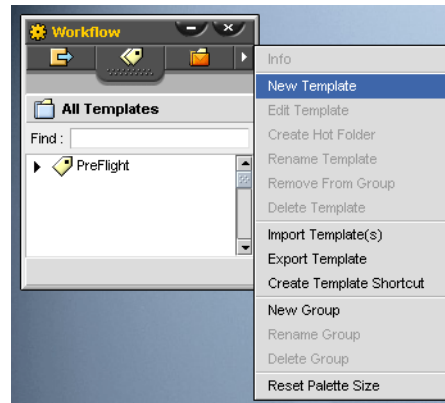


Figure 2: Creating a new template

The Job Ticket Editor dialog box appears.

3. Click the arrow, and select the Proof icon.

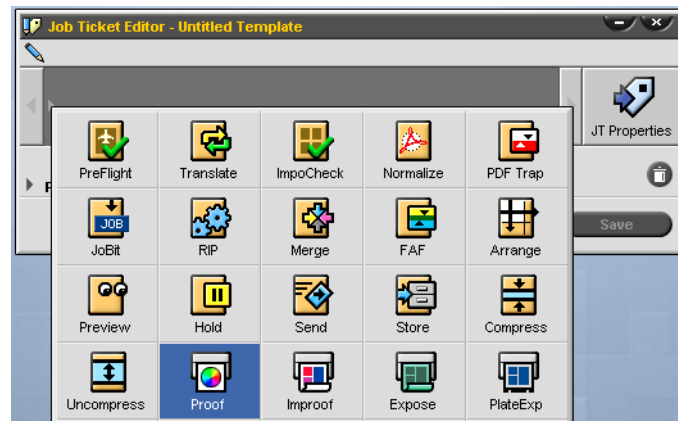


Figure 3: Selecting the Proof icon

4. In the Job Ticket Editor window, double-click the Proof icon.
The Job Ticket Editor—Proof dialog box appears.
5. On the Device&Media tab, from the Device box, select the Veris proofer to which you want to output.
6. Click the Marks&Labels tab, and set the following options:
 - Select the Layout Sheets check box.
 - Select the Labels check box.
 - Select the Color Strip check box, and then click the words Color Strip.
The Color Strip options appear on the right side of the dialog box.
 - From the Color Strip box, select the PPA proof4press control strip.

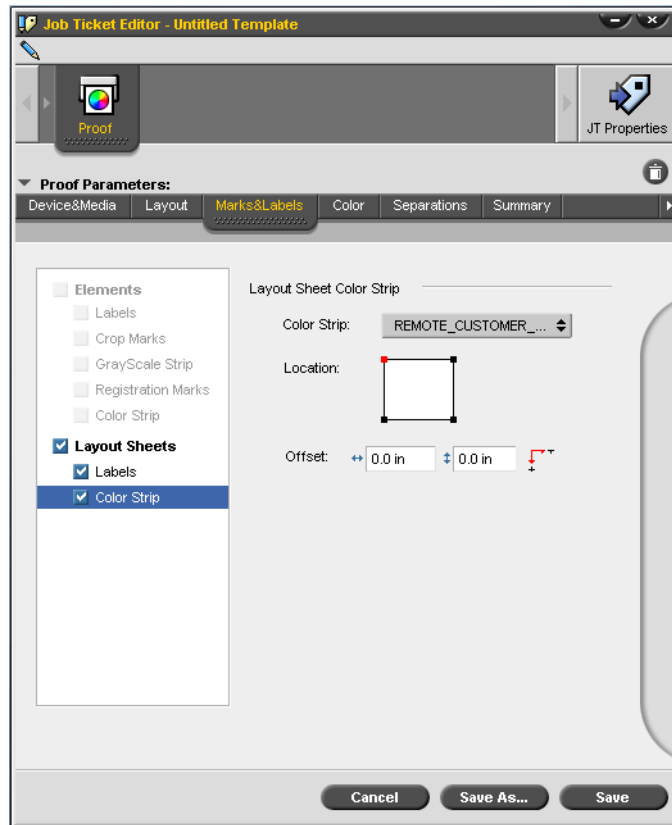


Figure 4: Marks&Labels tab settings

7. Click the **Color** tab, and set the following options:
 - Select the **User Predefined DCP Color Set** check box, and then select the DCP color set that you created for the PPA approved device link profile.
 - Select the **Apply ICC to Color Strip** check box.
8. Set the options on the other tabs as desired.

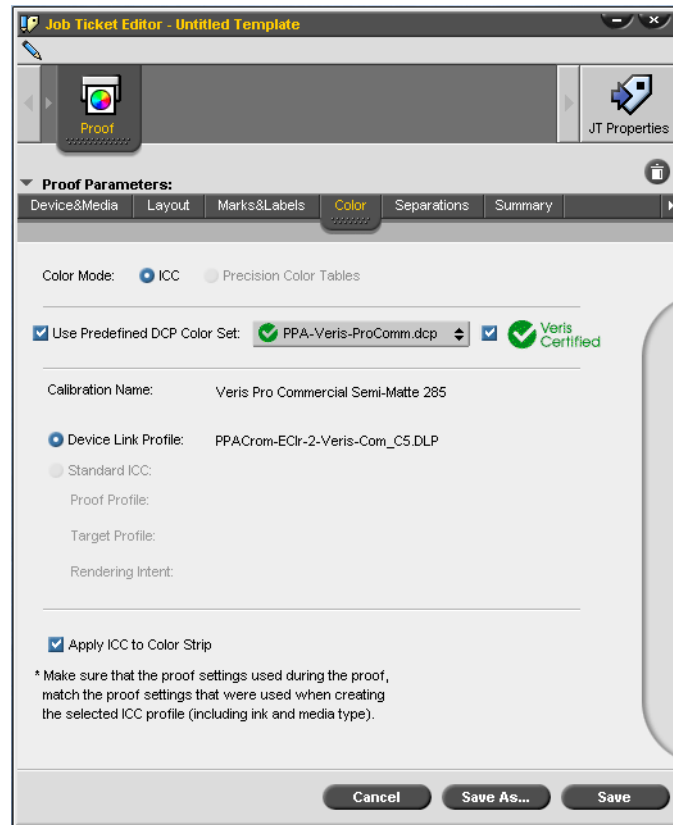


Figure 5: Color tab settings

9. Click **Save as**.
10. In the **Template name** box, type a name for the template, and then click **OK**.

Outputting Proofs

Drop your jobs on the Brisque template to output proofs. For details on outputting proofs, see the Brisque documentation.